

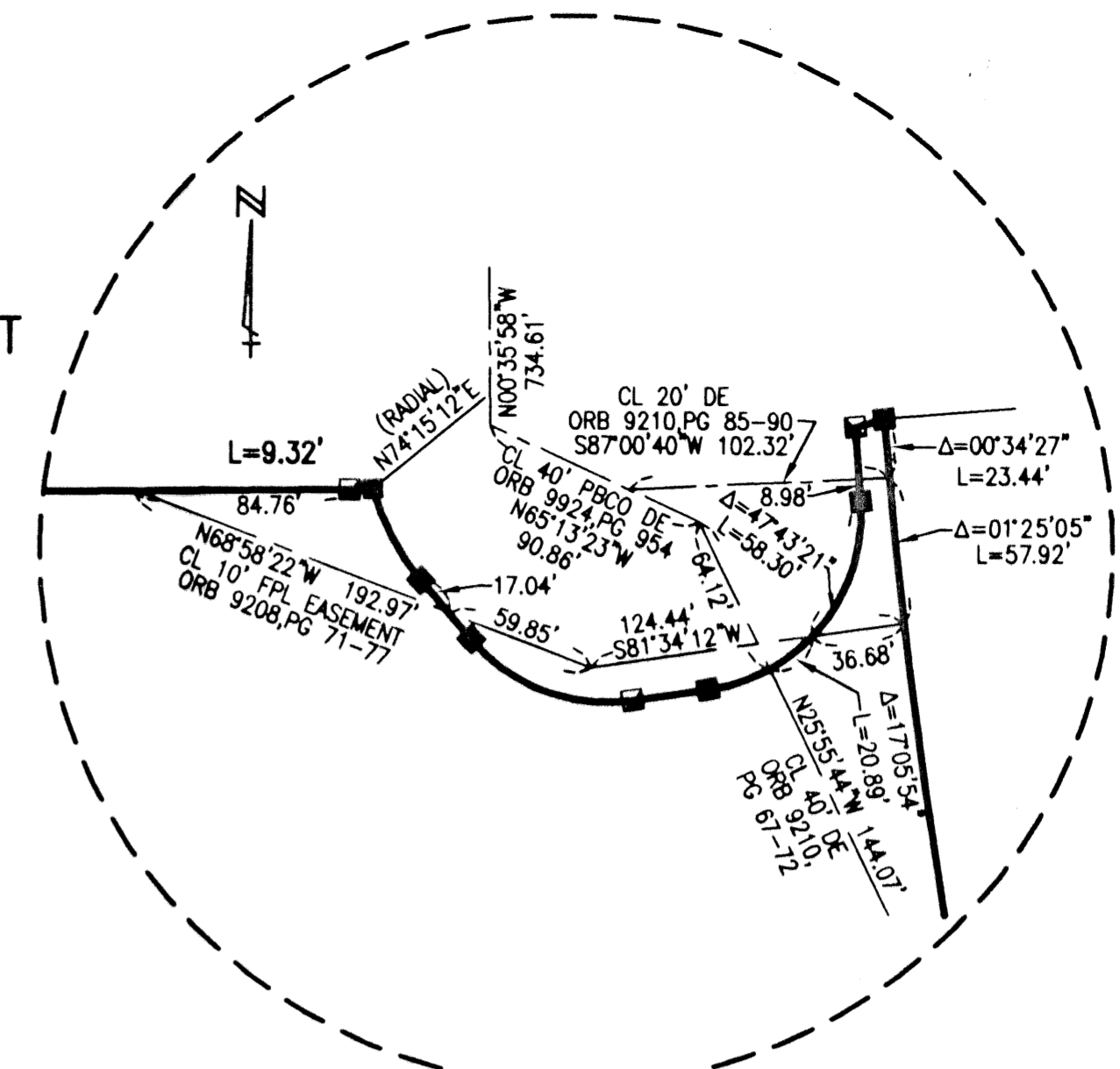
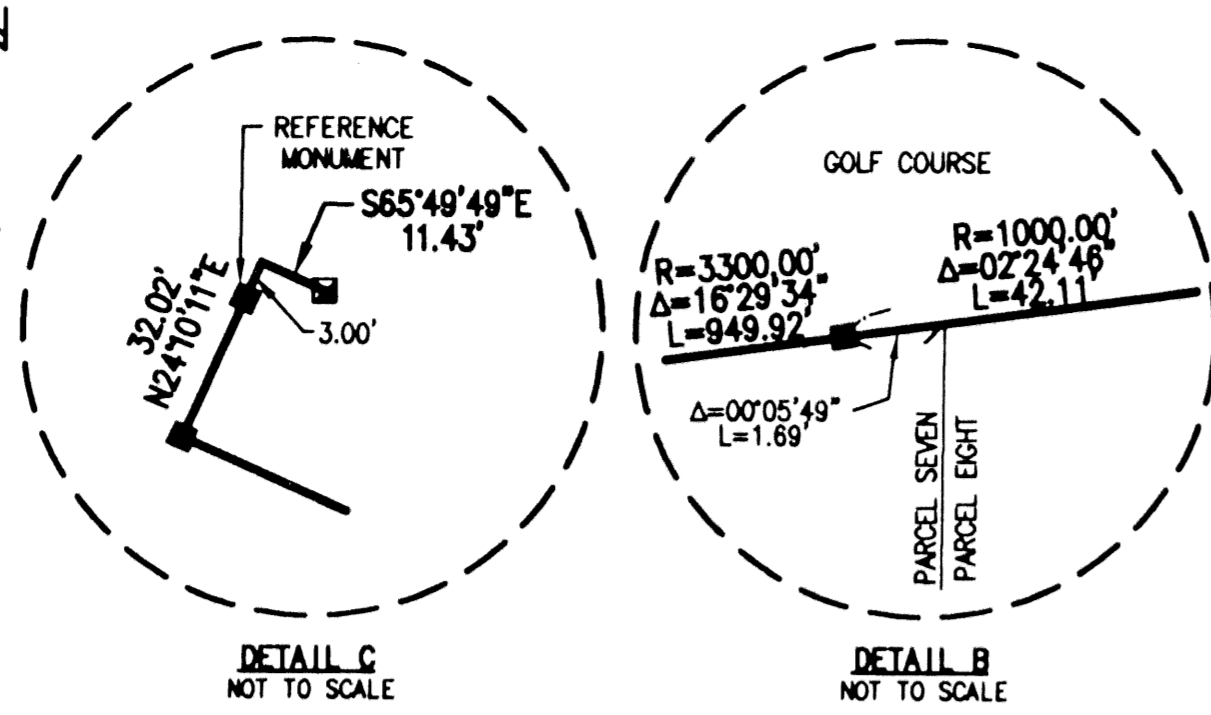
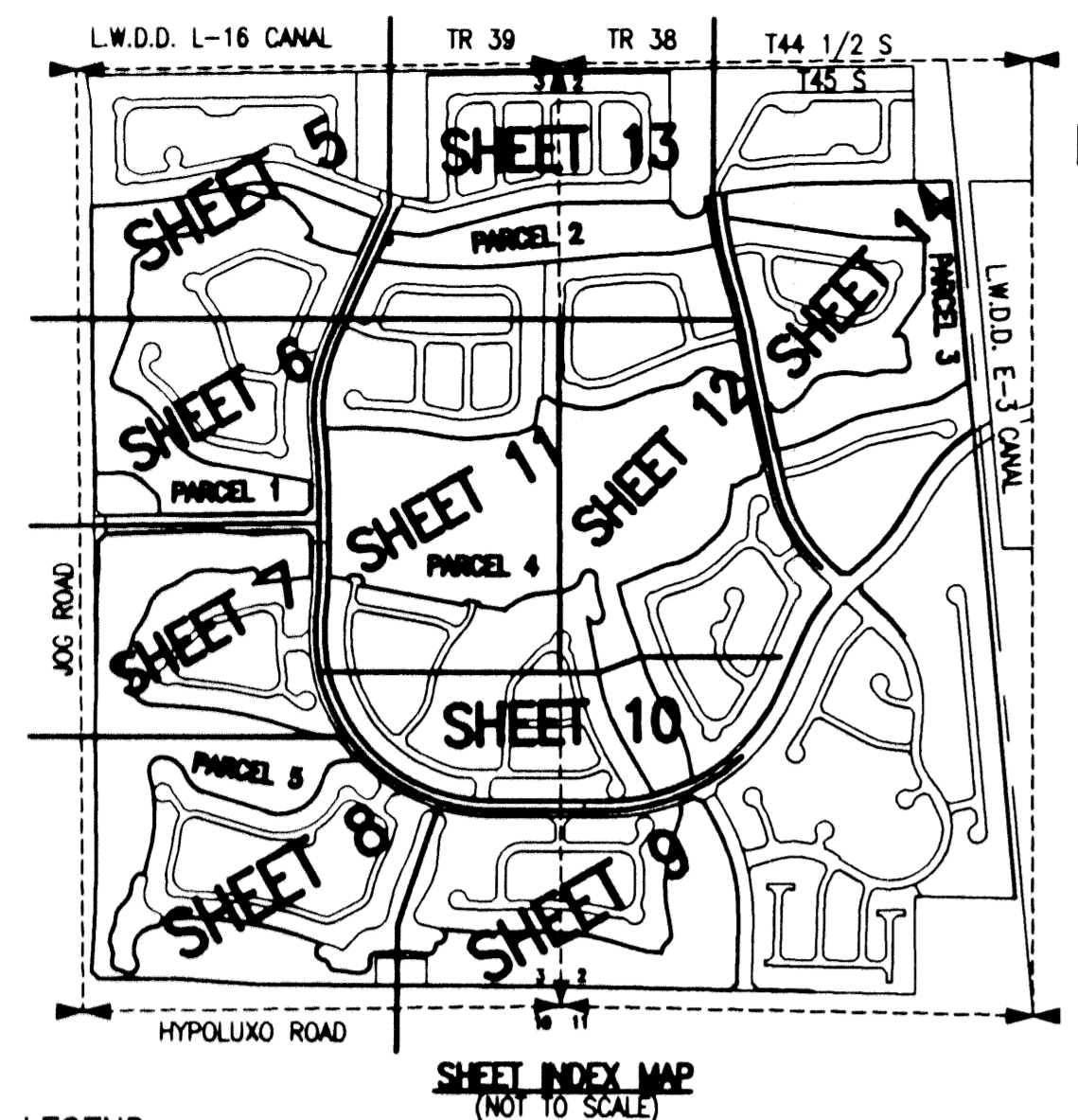
WINSTON TRAILS GOLF COURSE

PART OF WINSTON TRAILS P.U.D.
SITUATE IN SECTIONS 2 AND 3, TOWNSHIP 45 SOUTH, RANGE 42 EAST
PALM BEACH COUNTY, FLORIDA
TOGETHER WITH A REPLAT OF PARCEL 'G',
WINSTON TRAILS PLAT ONE, PLAT BOOK 71, PAGES 28-32
NOVEMBER, 2000 SHEET 13 OF 14

80

STATE OF FLORIDA
COUNTY OF PALM BEACH
THIS PLAT WAS FILED FOR
RECORD
THIS _____ DAY OF _____
AD, 2001 AND DULY RECORDED
IN PLAT BOOK _____ ON PAGE(S)
AND _____
DOROTHY H. WILKEN, CLERK
BY: _____, D.C.

CIRCUIT COURT SEAL



- LEGEND:
- LWDD LAKE WORTH DRAINAGE DISTRICT
 - BE BUFFER EASEMENT
 - PBCO PALM BEACH COUNTY
 - R/W RIGHT-OF-WAY
 - PB PLAT BOOK
 - PG(S) PAGE(S)
 - SEC SECTION
 - TWP TOWNSHIP
 - RGE RANGE
 - CL CENTERLINE
 - FND FOUND
 - R RADIUS
 - Δ CENTRAL ANGLE
 - L ARC LENGTH
 - SB SOUTHERN BELL
 - FPL FLORIDA POWER & LIGHT
 - UE UTILITY EASEMENT
 - DE DRAINAGE EASEMENT
 - EASE EASEMENT
 - ORB OFFICIAL RECORD BOOK
 - LAE LIMITED ACCESS EASEMENT
 - LME LAKE MAINTENANCE EASEMENT
 - LAEM LAKE MAINTENANCE ACCESS EASEMENT
 - (C) DEED
 - (D) CALCULATED
 - PERMANENT REFERENCE MONUMENT (FND.)
 - 4" X 4" CONCRETE #4323
 - PERMANENT REFERENCE MONUMENT (FND.)
 - 4" X 4" CONCRETE #4763
 - PERMANENT REFERENCE MONUMENT (SET)
 - 4" X 4" CONCRETE LB 048
 - PERMANENT REFERENCE MONUMENT NUMBER
(SEE COORDINATE TABLE FOR VALUE)

CREATION WINSTON TRAILS Golf Course
PAGE 80
PROJECT MAP # 1758
ZONING AT 150
DATE 11/15/00
BY 81-115
TAX 170
FUD NAME

REV.: 02-01-01
CAD FILE:
MUSSWTG\WGCRP10

| MONUMENT NUMBER | NORTHING | EASTING |
|-----------------|-------------|-------------|
| 52 | 819065.8594 | 936999.1346 |
| 53 | 819065.7485 | 937011.5974 |
| 54 | 819052.3484 | 937128.5321 |
| 55 | 819059.2827 | 937228.5517 |
| 56 | 819207.1064 | 937801.4166 |
| 57 | 819235.8017 | 938016.7473 |
| 58 | 819241.5976 | 938582.2561 |
| 59 | 819241.7525 | 938591.5769 |
| 60 | 819205.9208 | 938610.7084 |
| 61 | 819182.6023 | 938630.5845 |
| 62 | 819158.7687 | 938694.1296 |
| 63 | 819163.1708 | 938723.8045 |
| 64 | 819237.7502 | 938783.3290 |
| 65 | 819267.4532 | 938781.0577 |
| 66 | 819270.6686 | 938792.3571 |
| 67 | 818997.2144 | 938832.2027 |
| 68 | 818974.6236 | 938734.6639 |
| 69 | 818944.5384 | 938439.8866 |
| 70 | 818940.3608 | 938321.2651 |
| 71 | 818901.8062 | 937914.8698 |
| 72 | 818896.9476 | 937873.0432 |
| 73 | 818903.7910 | 936926.4283 |
| 74 | 819013.8348 | 936975.7956 |
| 75 | 819001.5554 | 937003.1674 |
| 76 | 819028.9272 | 937015.4468 |
| 77 | 819041.2066 | 936988.0750 |

SCALE:
1" = 80'
P.A. NO.:
97016.01
DATE:
NOVEMBER, 2000
DRAWING NO.
45-42-02-75

MOCK • ROOS
ENGINEERS • SURVEYORS • PLANNERS
5720 Corporate Way, West Palm Beach, Florida 33407
(561) 683-3113, fax 478-7248

WINSTON TRAILS GOLF COURSE
PART OF WINSTON TRAILS P.U.D.
SITUATE IN SECTIONS 2 AND 3, TOWNSHIP 45 SOUTH
RANGE 42 EAST
PALM BEACH COUNTY, FLORIDA